

PROTECTA® PUTTY PAD

INSTALLATION INSTRUCTIONS



General Product Description

Protecta® FR Putty Pads are an easy to apply fire and sound rated sealant supplied as a non-setting pad. The pad is hand workable, re-useable and re-serviceable due to its non-setting properties.

When water supply boxes are installed in dry lining partitions, the original fire rating of the partition is compromised. Fitting Protecta FR Putty Pads will reinstate the fire rating of the partition for 90 minutes and prevent the passage of smoke and flames in a fire, and sound and air movement during service life, through the wall boxes into the cavity.

Protecta® FR Putty Pads are shaped for use on both single and double wall box installations in dry lining walls. The pads are supplied in kits containing a rectangular and a circular shape that fits to the wall boxes.

Properties

- Gives water supply boxes a high fire resistance in dry lining partitions.
- Stops penetration of both cold and hot smoke.
- Self-adhesive and very easy to apply without tools.
- Can be used in single and double wall boxes (cold and hot water).
- Unaffected by moisture; can be used in wet rooms.
- Never hardens and ensures a tight fit.
- Can be reshaped to other sizes if necessary.

Fire Classification

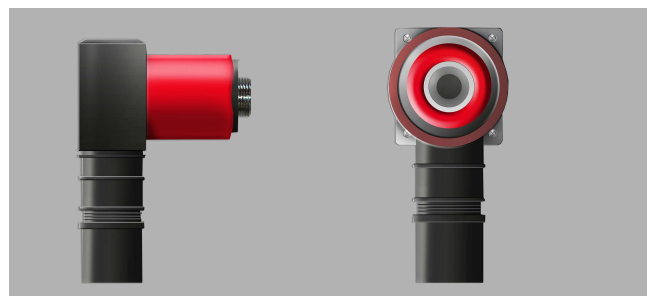
Construction	Description	Classification
Flexible walls with thickness \geq 100mm	Single or double Høiax Push Wallbox 15mm, or identical wall boxes in another trademark	EI 90 (E 90)

GENERAL GUIDE

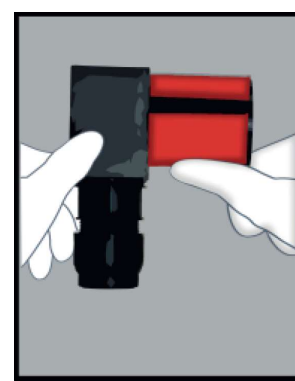
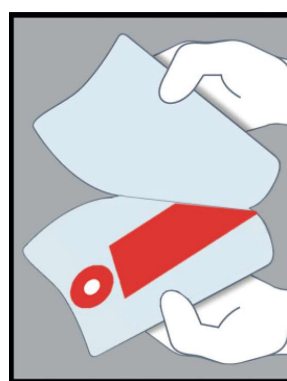
Minimum separations and limitations: Socket boxes can be placed back-to-back or side-by-side with zero distance, or further apart on both sides. They may also be placed on one side of the wall only, where the remaining side of the wall is not punctured at the same point.

Supporting constructions: Flexible walls must have a minimum thickness of 100 mm and comprise steel studs or timber studs*) lined on both faces with minimum 2 layers of 12.5mm thick boards. The supporting construction must be classified in accordance with EN 13501-2 for the required fire resistance period.

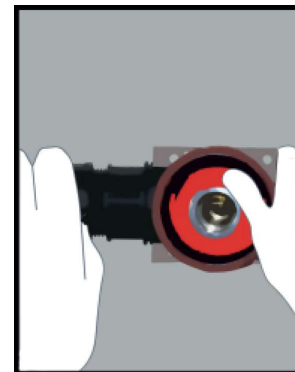
*) Timber studs: no part of the penetration seal may be closer than 100mm to a stud, and minimum 100mm of insulation of class A1 or A2 must be provided within the cavity between the penetration seal and the stud.



Installation Instructions



1. The wall box surfaces must be clean and sound, free from dirt, grease and other contamination.
2. Remove the backing paper.
3. Place the rectangular pad over the plastic sleeve so that the pad completely covers the plastic.
4. Insert the circular pad into the bottom of the plastic sleeve.
5. After installing the wall boxes, make sure there are no gaps against the gypsum wall boards. If there are gaps please seal these with a plaster filler or Protecta® FR Acrylic.



TEST STANDARDS

This Installation Instructions and the Technical Data Sheet are based on the product's European Technical Assessment issued in accordance with regulation (EU) No 305/2011 on the basis of EAD 350454-00-1104, September 2017, tested to EN 1366-3 in conjunction with EN 1363-1. The product hold the following approval marks; CE-mark for Europe, UL-EU Certificate Internationally, UAE Certificate of Compliance & AS assessment for Australia and New Zealand.