

# Protecta® Interior Paint FR-1

Colour Card



Protecta®



# Protecta® Interior Paint FR-1

**Protecta Interior Paint FR-1®** is an intumescent decorative paint designed to stop the spread of flames on walls and ceilings. Almost zero emissions after application also protects people's health from exposure to harmful chemicals.

Available in 28 decorative, acrylic-based colours, Protecta® Interior Paint FR-1 is formulated to the highest specification and provides a smooth, non-reflective finish to walls, ceilings and wood. Our fire-resistant formula is non-toxic, contains near-zero VOC, dries in as quick as 30 minutes and leaves no lingering paint smell.

Whether applied with a brush, roller or spray gun, our fire-resistant paint can be used on pre-painted areas, brand-new interior walls, ceilings and woodwork. To upgrade the fire rating of older, pre-painted surfaces (water or solvent based), Protecta® Interior Paint FR-1 can be applied directly on top of existing surfaces. It's one-layer system provides excellent coverage and usually requires no primer or top coat, is easy to use and easy to clean up.

Designed to last, our wide range of modern colours are easy to clean, crack resistant and mould resistant to ensure longevity.

## Main uses:

Ideal for use in communal areas (e.g. public buildings, schools and hospitals) on broad walls and timber. Protecta® Interior Paint FR-1 insulates against heat and prevents the spread of fire (unlike conventional paint systems).

## Product features:

- Fire resistance approval
- Prevents the spread of flame on walls, ceilings and timber doors
- Available in 28 decorative shades, including white
- Non-toxic, emission free with near zero VOC (0.0001g/L)
- One-layer system
- FR-1 Paint can be sprayed, brushed or rolled
- Can be applied over an existing layer of water or solvent based paint
- Durable and robust – designed to last
- Easy to clean



CONSTRUCTION



FIRE  
RATED



INTERIOR



NON  
TOXIC



EASY  
CLEAN



QUICK  
DRYING



MOULD  
RESISTANT



ECO-  
FRIENDLY

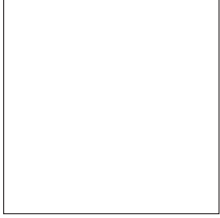


CRACK  
RESISTANT

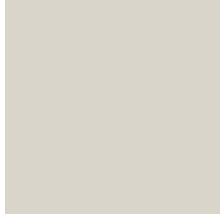
# Colour options:



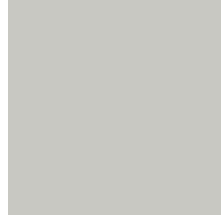
Snow-white



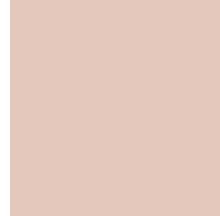
Light Pearl Grey



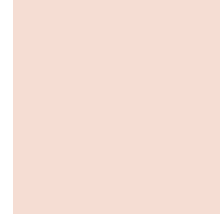
Light Steel



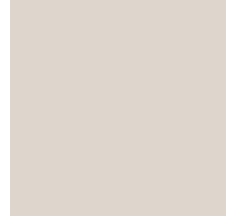
Dusky Coral



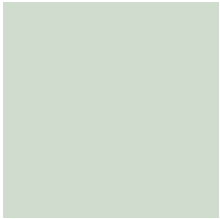
Coral Cream



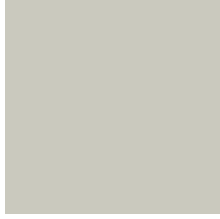
Sovereign



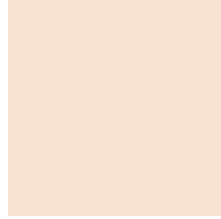
Willow



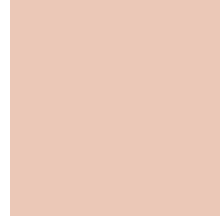
Pearl Grey



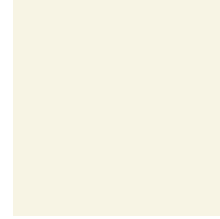
Light Peach



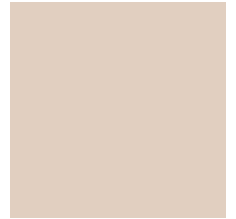
Dark Coral



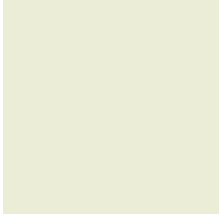
Cream



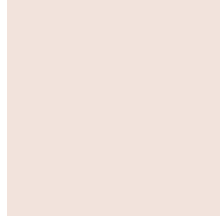
Light Cocoa



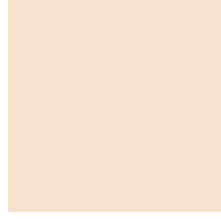
Spring Mist



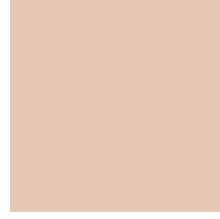
Light Blossom



Mid Peach



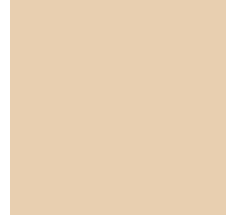
Sandle



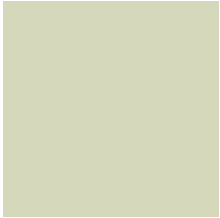
Ivory Cream



Butterscotch



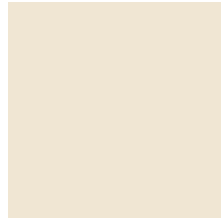
Artichoke



Dusky Pink



Pale Peach



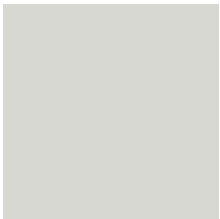
Mid Sandle



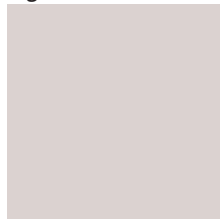
Light Mustard Cream



Slate



Light Shimmer



Dark Salmon



Light Sandle



Light Coffee





## Reaction to Fire:

\*Over any wood based substrate – B-s1,d0

\*Over any wood as topcoat over existing layer of water based paint – B-s1,d0

\*Over any wood as topcoat over existing layer of solvent based paint – B-s2,d0

\*Please refer to technical data sheets for WFT and thickness/density of substrate

Euro Class reference system

First letter:

- A = Non-organic, non-combustible
- B = Organic, non-combustible
- C, D = Limited to medium contribution to fire
- E, F = High to easily flammable

Second part

- S1 = Little or no smoke emission
- S2 = Medium smoke emission
- S3 = Substantial smoke

Third part

- D0 = No flaming droplets (during first 10 minutes of exposure)
- D1 = No flaming droplets or particles persisting longer than 10 seconds (during first 10 minutes of exposure)
- D2 = Flaming droplets or particles lasting longer than 10 seconds (during first 10 minutes of exposure)

### Resistance to Fire:

\*Up to 30 mins depending on application

\*Please refer to technical data sheet for application details

### Approvals:

ETA 16/0520

ETA 21/0044



## Contact us

### **UK (North) Head Office and Factory**

Polyseam Ltd.

15 St Andrews Road,  
Huddersfield, HD1 6SB. United Kingdom.

Tel: +44(0)1484 421036

E: [post.uk@polyseam.com](mailto:post.uk@polyseam.com)

### **Norway**

Polyseam AS.

Ravneveien 7, Linnestad Næringsområde  
N-3174 Revetal, Norway.

T: +47 3330 6690

E: [post.no@polyseam.com](mailto:post.no@polyseam.com)

### **Sweden**

Polyseam AB.

Box 90128

120 21 Stockholm, Sweden.

T: +46 (0)8 124 563 00

E: [post.se@polyseam.com](mailto:post.se@polyseam.com)